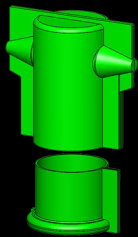
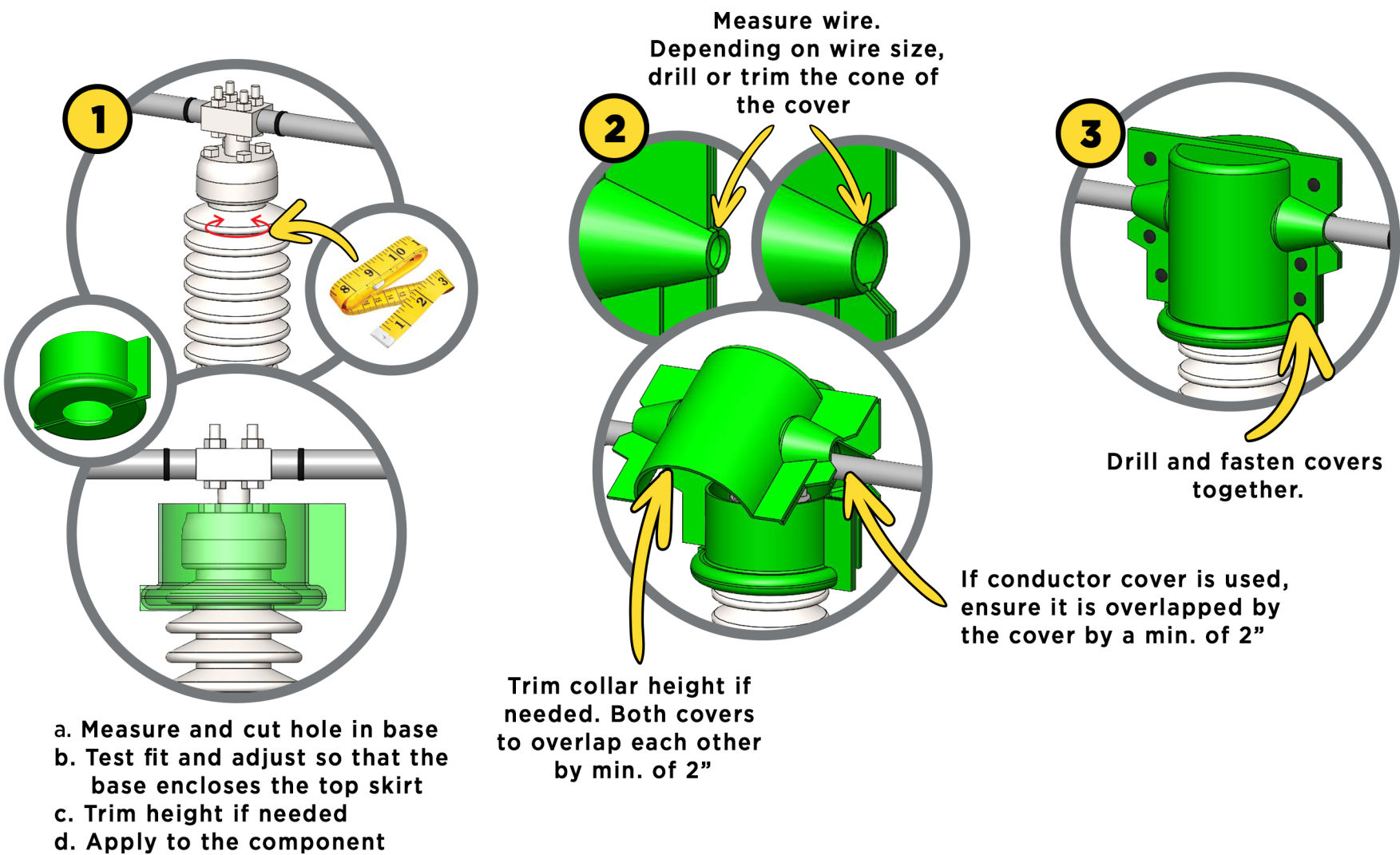


POST INSULATOR COVER TYPICAL APPLICATION



PIC-0700X1200

Includes BBU-0650X0600

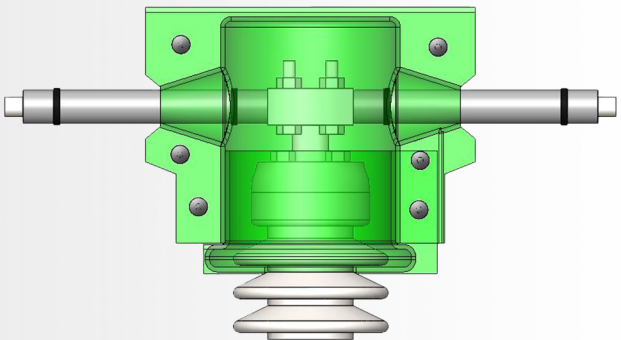


Before adapting covers to fit components, read the Installation Basics & Best Practices carefully

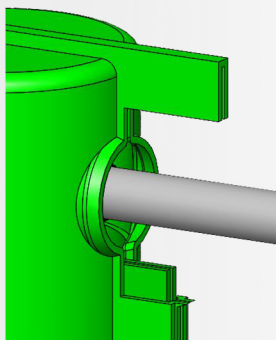


A CORRECT FIT

- Fully isolates underlying component
- No gaps/holes - no access for wildlife
- Fully secured and can't be dislodged
- Does not compromise insulation
- Minimum 2" air gap is maintained between all openings and components



FITMENT ISSUES



For tips on fixing gaps and addressing poor fitment, refer to Installation Basics & Best Practices



DISCLAIMER

These products should only be installed, used, or serviced by adequately trained personnel. These instructions are not a substitute for adequate training in the safe use of these products, and they do not address all situations that may be encountered when using these products. When using any product, always read and follow the installation and operating instructions and warnings for the product, all applicable federal, state, and local safety regulations, industry standards, and your employer's internal safety guidelines and operating instructions. Failure to follow applicable safety rules and instructions may result in serious injury, death, and property damage.

The user is responsible for the safe installation and use of any product and must evaluate the conditions at the time of use and consult with their employer's internal safety guidelines or safety experts hired by your employer, as needed. Hubbell Power Systems, Inc. is not liable for death, serious injury, or property damage resulting from the use of these products in any manner that is inconsistent with the product installation and operating instructions, your employer's internal safety guidelines, or recommendations from safety experts hired by your company.



GREENJACKET®

1-877-448-9701 | greenjacketsupport@hubbell.com | www.hubbell.com

©2024 Hubbell Incorporated.
Because Hubbell has a policy of continuous product improvement, we reserve the right to change design and specifications without notice.
PIC-0700x1200 Typical Application | Rev. 1 | Page 1/1